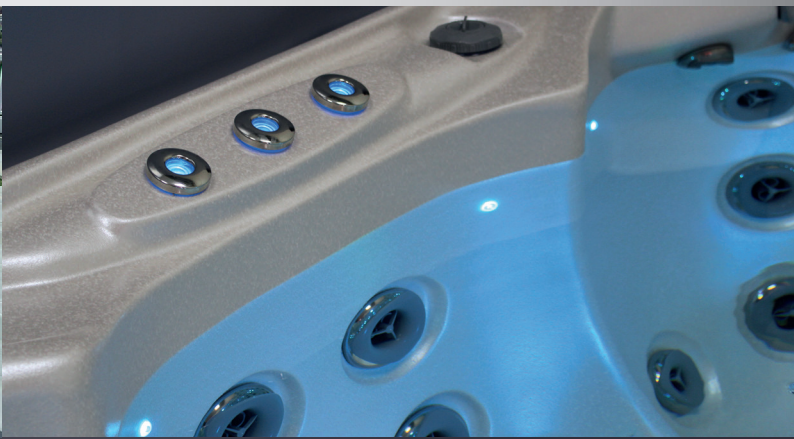


HOT TUB TORONTO



MODEL
TORONTO
84" X 84" X 36"



Underwater Spotlight



Spa Touch Display



Waterline Lighting



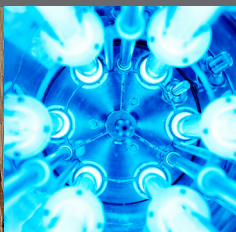
Ozonator



Wave Select Cabinet



UV Desinfection



RIVER SPAS

www.river-spas.com

HOT TUB TORONTO



RIVER SPAS

TECHNICAL DATA

Dimensions:	84" x 84" x 36"
Empty weight:	794 lbs
Water capacity:	378 gal
Total weight:	3922 lbs
Cabinet color:	see overview
Shell color:	see overview
Cabinet:	WPC Cabinet

DETAILS

Seats:	5
Lounges:	1
Water jets:	57
Foot massage:	included
Neck massage:	included
Insulation:	Xtreme Insulation
Framework:	Stainless steel frame
Controller:	Balboa
Control panel:	Spatouch
Single Control Button:	optional
Water pump:	1 x 3 HP 2-Spd + 2 x 3 HP 1-Spd
Circulation pump:	0.25 HP
Ozonator:	included
UV disinfection:	included
Filter:	2 x filter
Water drain:	included
Heating:	5.5 KW Balboa North America 60 Hz

ELECTRICAL REQUIREMENTS:

Voltage:	240 Volts
Maximum Current:	48 A
Number of Wires	4
GFCI Rating	60 A

LED LIGHTING

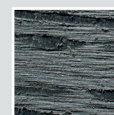
LED waterline:	included
LED underwater spotlight:	included
LED corner light:	depending on model
LED ambient light:	depending on model
Water fountains:	included
Waterfall:	Wave Design
Handle:	included

OPTIONAL

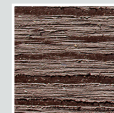
- Airblower including aromatherapy
- (up to 14 additional air jets)
- Waterwave Sound System
- Waterwave Select Cabinet
- WiFi Control System
- Hydrospeed Massage
- Waterwave Clear Salt System
- Preparation of external access (e.g. air/heat pump)

PREMIUM CABINET

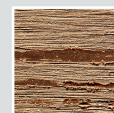
Wave Select Cabinet



Dark Grey

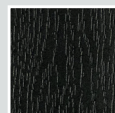


Moccha

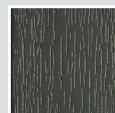


Light Oak

CABINET COLOR STANDARD



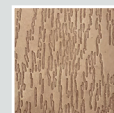
Black



Dark Grey



Light Grey



Dark Brown

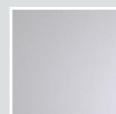
CABINET COLOR STANDARD



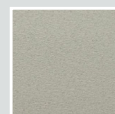
Pure White



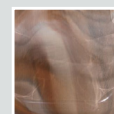
Silver Marble



White Pearl



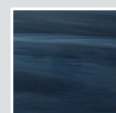
Gypsum



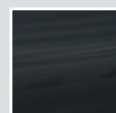
Mediterr. Sunset



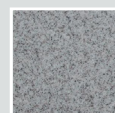
Ocean Wave



Summer Sapphire



Midnight Opal



Sahara