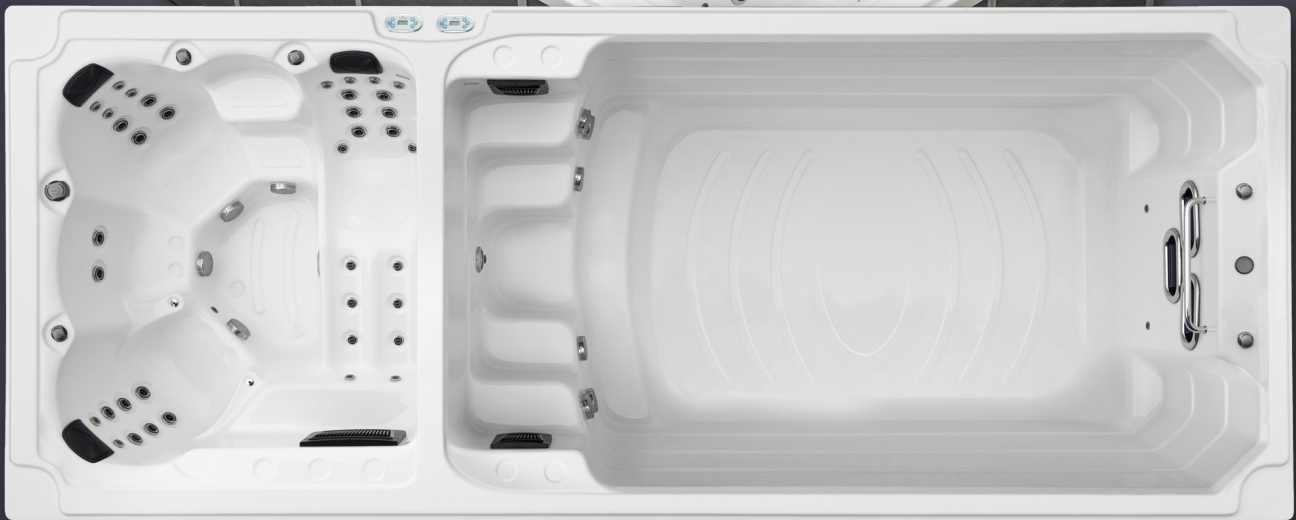


SWIMSPA FUEGO



2 ZONE SWIMSPA
MODEL FUEGO
232" X 92" X 61"



Underwater Spotlight



Spa Touch Display



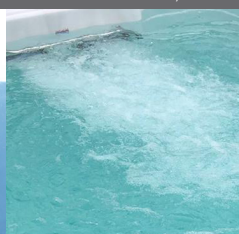
Waterline Lighting



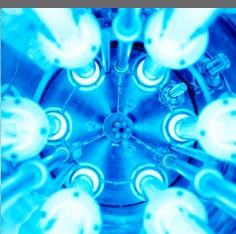
Ozonator



Counter-current system

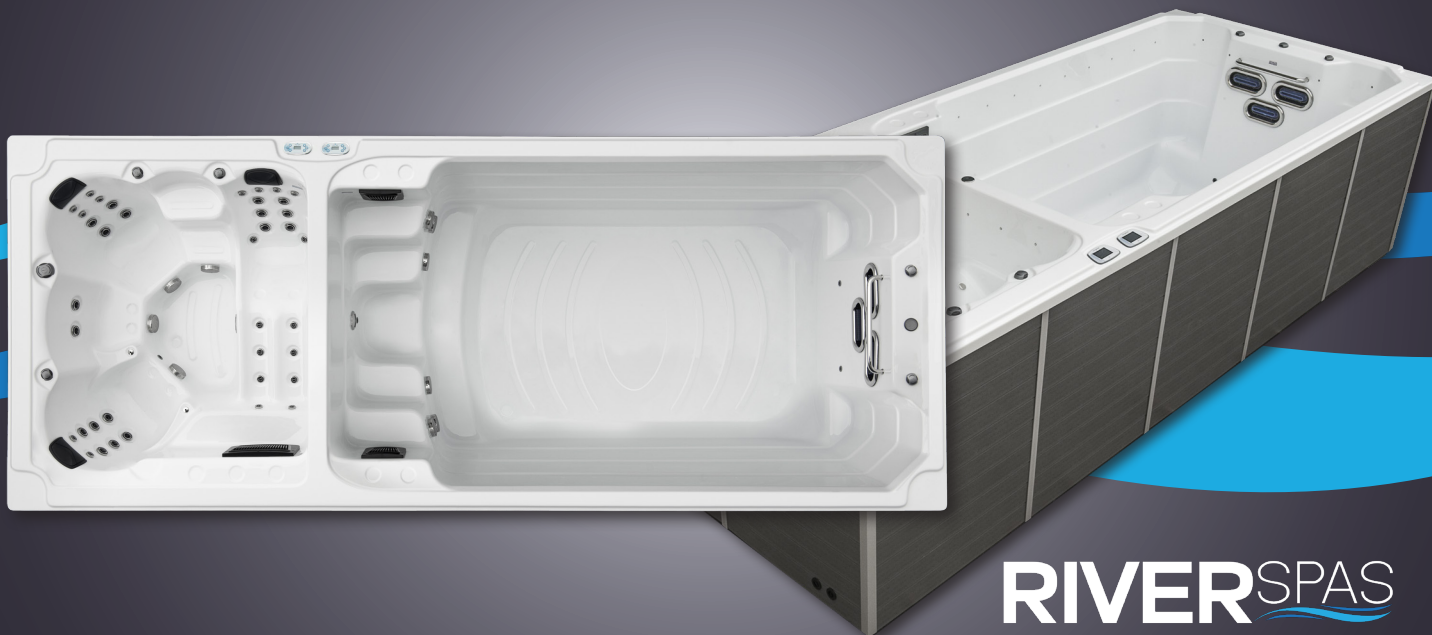


UV Desinfection



RIVER SPAS
www.river-spas.com

SWIMSPA FUEGO



RIVERSPAS

TECHNICAL DATA

| | |
|-----------------|------------------|
| Dimensions: | 232" x 93" x 61" |
| Empty weight: | 3197 lb |
| Water capacity: | 3038 gal |
| Total weight: | 28550 lb |
| Cabinet color: | Dark Grey |
| Shell color: | Silver Marble |
| Cabinet: | WPC Cabinet |

COUNTER CURRENT SYSTEM AND PUMPS

| | |
|------------------------------------|---------------------|
| Counter-current system: | included |
| Water pump Counter Current System: | 2 x 3 HP + 1 x 2 HP |
| Water pump Hottub: | 2 x 3 HP |
| Circulation pump: | 0.25 HP |

DETAILS

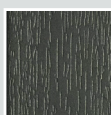
| | |
|----------------------|--------------------------------------|
| Seats: | 3 |
| Lounges: | 1 |
| Water jets: | 28 |
| Insulation: | Xtreme Insulation |
| Framework: | Galvanized Steel Frame |
| Controller: | 2x Balboa |
| Air/water regulator: | included |
| Control panel: | included |
| Ozonator: | 2x included |
| UV disinfection: | included |
| Shut-off Valves: | included |
| Water drain: | included |
| Filter SwimSpa area: | 4 x lamella filter |
| Heating: | 5.5 KW Balboa North America 60 Hz |

LED LIGHTING

| | |
|---------------------------|----------|
| LED underwater spotlight: | included |
|---------------------------|----------|

CABINET COLOR

SHELL COLOUR



Dark Grey



Silver Marble

ELECTRICAL REQUIREMENTS:

| | |
|------------------|-----------|
| Voltage: | 240 Volts |
| Maximum Current: | 48 A |
| Number of Wires: | 4 |
| GFCI Rating: | 60 A |

RIVERSPAS