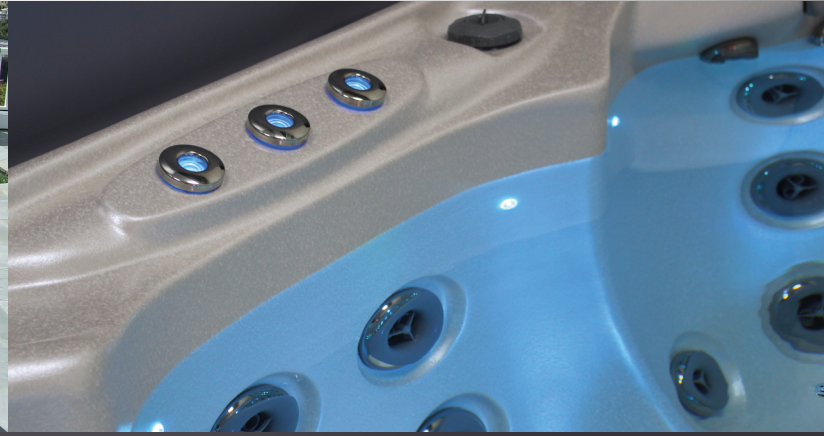


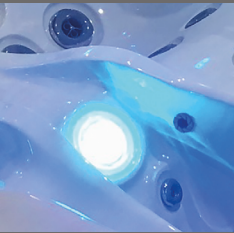
# HOT TUB TORONTO



MODEL  
TORONTO  
84" X 84" X 36"



Underwater Spotlight



Spa Touch Display



Waterline Lighting



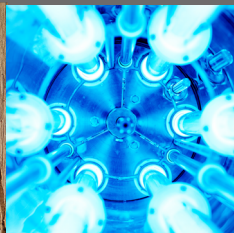
Ozonator



Wave Select Cabinet



UV Desinfection



**RIVER** SPAS

[www.river-spas.com](http://www.river-spas.com)

# HOT TUB TORONTO



**RIVER**SPAS

## TECHNICAL DATA

Dimensions:	84" x 84" x 36"
Empty weight:	794 lbs
Water capacity:	378 gal
Total weight:	3922 lbs
Cabinet color:	Premium Dark Grey
Shell color:	Pure White
Cabinet:	WPC Cabinet

## DETAILS

Seats:	5
Lounges:	1
Water jets:	57
Foot massage:	included
Neck massage:	included
Insulation:	Xtreme Insulation
Framework:	Stainless steel frame
Controller:	Balboa
Control panel:	Spatouch
Single Control Button:	optional
Water pump:	1 x 3 HP 2-Spd + 2 x 3 HP 1-Spd
Circulation pump:	0.25 HP
Ozonator:	included
UV disinfection:	included
Filter:	2 x filter
Water drain:	included
Heating:	5.5 KW Balboa, North America 60 Hz

## ELECTRICAL REQUIREMENTS:

Voltage:	240 Volts
Maximum Current:	48 A
Number of Wires	4
GFCI Rating	60 A

## LED LIGHTING

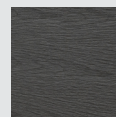
LED waterline:	included
LED underwater spotlight:	included
LED corner light:	depending on model
LED ambient light:	depending on model
Water fountains:	included
Waterfall:	Wave Design
Handle:	included

## OPTIONAL

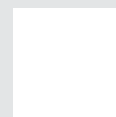
- Airblower including aromatherapy (up to 14 additional air jets)
- Waterwave Sound System
- Waterwave Select Cabinet
- WiFi Control System
- Hydrospeed Massage
- Waterwave Clear Salt System
- Preparation of external access (e.g. air/heat pump)

## CABINET COLOR

## ACRYLIC COLOR



Premium Dark Grey



Pure White

**RIVER**SPAS

www.river-spas.com