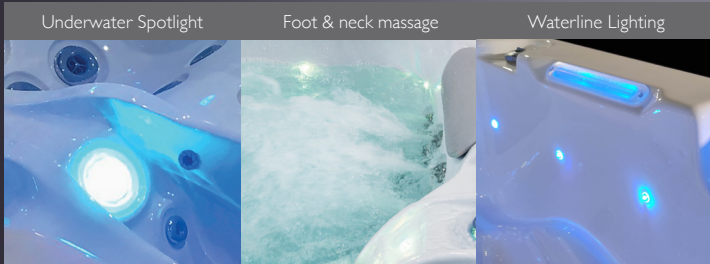


# HOT TUB RENO



MODEL  
RENO  
79" X 79" X 32"



Underwater Spotlight

Foot & neck massage

Waterline Lighting



Ozonator

Thermolayer insulation

High quality jets

**RIVER** SPAS  
[www.river-spas.com](http://www.river-spas.com)

# HOT TUB RENO



**RIVER**SPAS

## TECHNICAL DATA

Dimensions:	79" x 79" x 32"
Empty weight:	518 lbs
Water capacity:	277 gal
Total weight:	2833 lbs
Cabinet color:	see overview
Shell color:	see overview

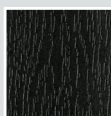
## LED LIGHTING

LED underwater spotlight:	included
LED waterline:	included
Water fountains:	included

## DETAILS

Seats:	5
Lounges:	1
Water jets:	51
Foot massage:	included
Neck massage:	included
Insulation:	Xtreme Insulation
Framework:	Stainless steel frame
WPC paneling:	included
Controller:	Balboa
Control panel:	TP600
Water pump:	2 x 3 HP I-Spd
Circulation pump:	0.25 HP
Ozonator:	included
Filter:	2 x filter
Water drain:	included
Heating:	5.5 KW Balboa North America 60Hz

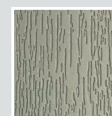
## CABINET COLOR STANDARD



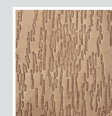
Black



Dark Grey

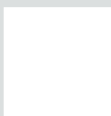


Light Grey



Dark Brown

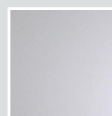
## CABINET COLOR STANDARD



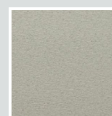
Pure White



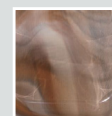
Silver Marble



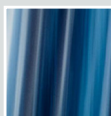
White Pearl



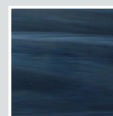
Gypsum



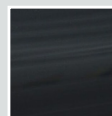
Mediterranean Sunset



Ocean Wave



Summer Sapphire



Midnight Opal



Sahara

## ELECTRICAL REQUIREMENTS:

Voltage:	240 Volts
Maximum Current:	40 A
Number of Wires:	4
GFCI Rating:	50 A

**RIVER**SPAS