

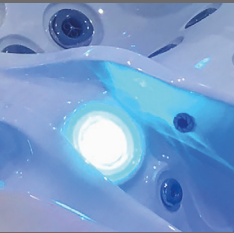
HOT TUB HAMILTON



MODEL
HAMILTON
84" X 78" X 34"



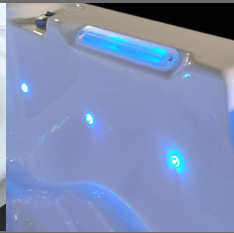
Underwater Spotlight



Spa Touch Display



Waterline Lighting



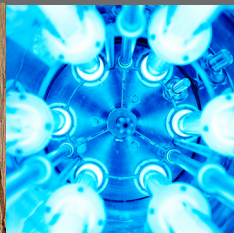
Ozonator



Wave Select Cabinet



UV Desinfection



RIVER SPAS

www.river-spas.com

HOT TUB HAMILTON



RIVERSPAS

TECHNICAL DATA

Dimensions:	84" x 78" x 34"
Empty weight:	706 lbs
Water capacity:	330 gal
Total weight:	3461 lbs
Cabinet color:	Premium Dark Grey
Shell color:	Pure White
Cabinet:	WPC Cabinet

DETAILS

Seats:	4
Lounges:	1
Water jets:	52
Foot massage:	included
Neck massage:	included
Insulation:	Xtreme Insulation
Framework:	Stainless steel frame
Controller:	Balboa
Control panel:	Spatouch
Single Control Button:	optional
Water pump:	1 x 3 HP 2-Spd + 2 x 3 HP 1-Spd
Circulation pump:	0.25 HP
Ozonator:	included
UV disinfection:	included
Filter:	2 x filter
Water drain:	included
Heating:	5.5 KW Balboa, North America 60 Hz

ELECTRICAL REQUIREMENTS:

Voltage:	240 Volts
Maximum Current:	48 A
Number of Wires	4
GFCI Rating	60 A

LED LIGHTING

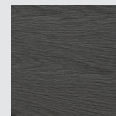
LED waterline:	included
LED underwater spotlight:	included
LED corner light:	depending on model
LED ambient light:	depending on model
Water fountains:	included
Waterfall:	Wave Design
Handle:	included

OPTIONAL

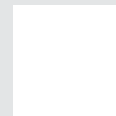
- Airblower including aromatherapy (up to 14 additional air jets)
- Waterwave Sound System
- Waterwave Select Cabinet
- WiFi Control System
- Hydrospeed Massage
- Waterwave Clear Saltsystem
- Preparation of external access (e.g. air/heat pump)

CABINET COLOR

ACRYLIC COLOR



Premium Dark Grey



Pure White

RIVERSPAS

www.river-spas.com